

FORT LAUDERDALE

magazine

MAY 2019

LABOR FORCE

LOCAL JOBS
THAT NEED
FILLING



MOMS &
GRADS
GIFTS FOR
MAY'S SPECIAL
PEOPLE

SUMMER *of* FUN

CAMPS,
CONCERTS
+ MORE



Where the Sun Shines

A Solar Isle Drive home complements its interior design with Florida's natural lighting. *by* **GISEL HABIBNEJAD**
photos courtesy **TODD KIRKPATRICK, WHITAKER REALTY**



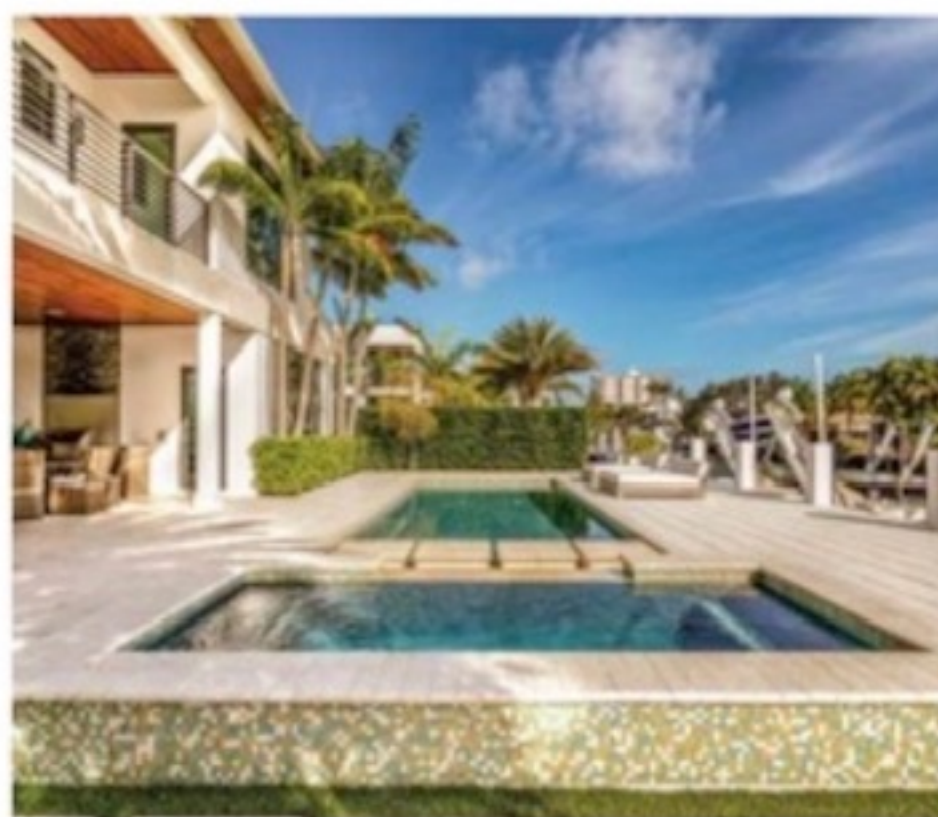
THE contemporary home allows natural lighting to take center stage. The kitchen, living area and office space share an open format design. Each of these areas has direct views of the pool and the water. Encompassing 2,264 square feet, the residence includes five bedrooms, five full baths and two partial baths. In addition, it features an elevator, media room, private dock, three-car garage and more.

The modern designs inside and out are the work of architecture firm Randall Stofft, an award-winning company located in Delray whose passion includes couture architecture, and interior design firm Marc-Michaels Interior Design, a Boca-based company that has been around for 30 years and is experienced in detail-oriented work such as furniture and space planning, reflected ceiling plans, tile drawings and fireplace features. The home









was built by VCM Builders, a premier building company based on Las Olas specializing in luxury homes and commercial construction.

This concert of talents especially shows in the built-in fireplace located in the main living area. The floor-to-ceiling marble structure holds the subtly displayed fireplace between the office space and living area.

The outdoor space features a boutique hotel-style pool, private dockage, wet bar, barbecue and hot tub/spa right on the canal leading to the Intracoastal Waterway. 🍷





The waterfront property features a private dock and a canal width of 81 to 120 feet.

